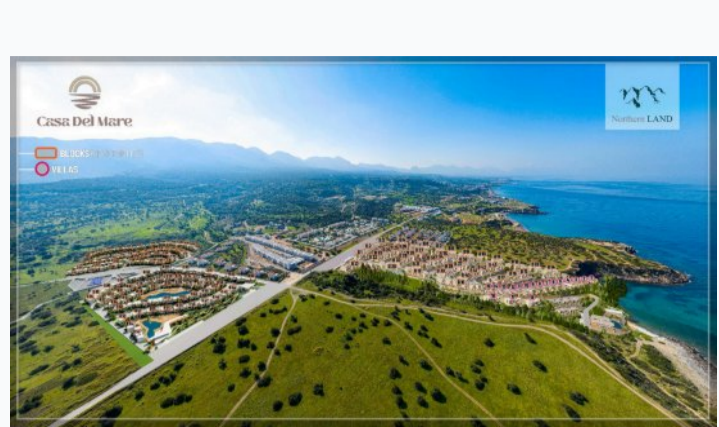
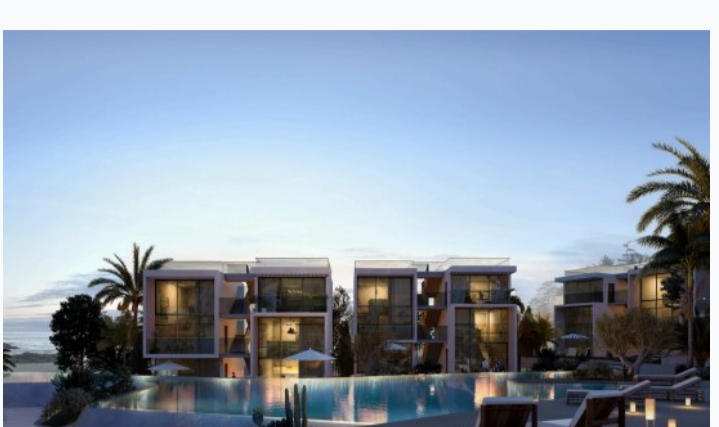


Northernland (Developer) + Casa del Mare - 2 Etap (Complex)

Casa del Mare - 2 Etap residential complex

Location **Kyrenia, Esentepe**



About the project

Developer Northernland
Start of sale 01.04.2023
Key handover 2026
Houses/blocks 50
Building floor 2 Min, 2 Max
Units total 132 - Studio, 132 - 1+1

Distance to the sea - 550 m

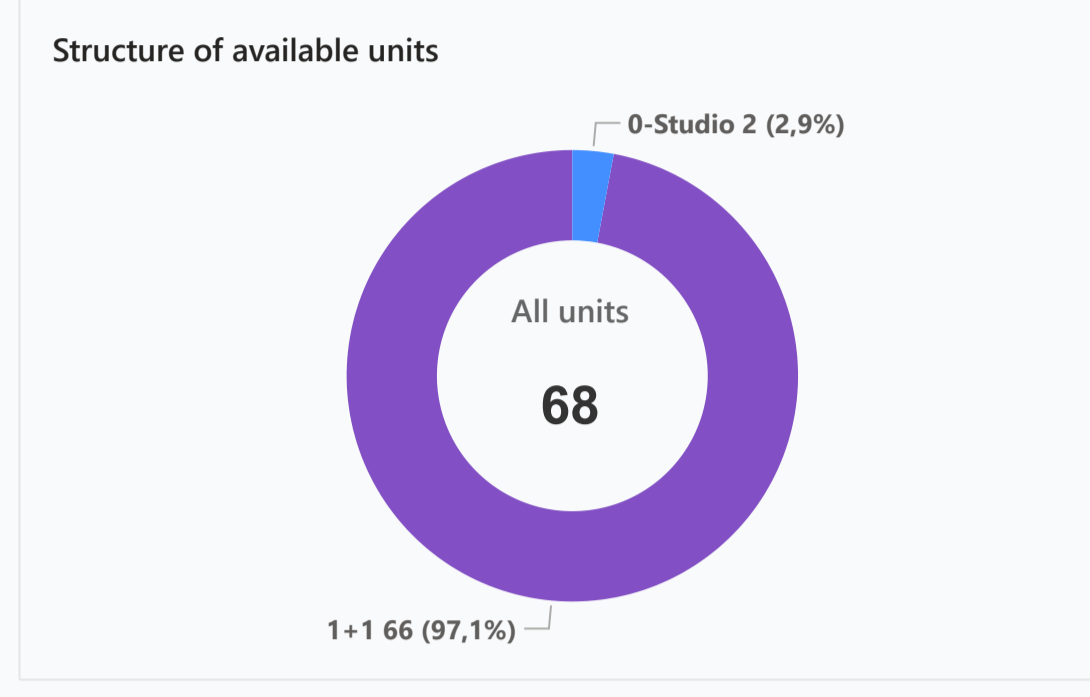
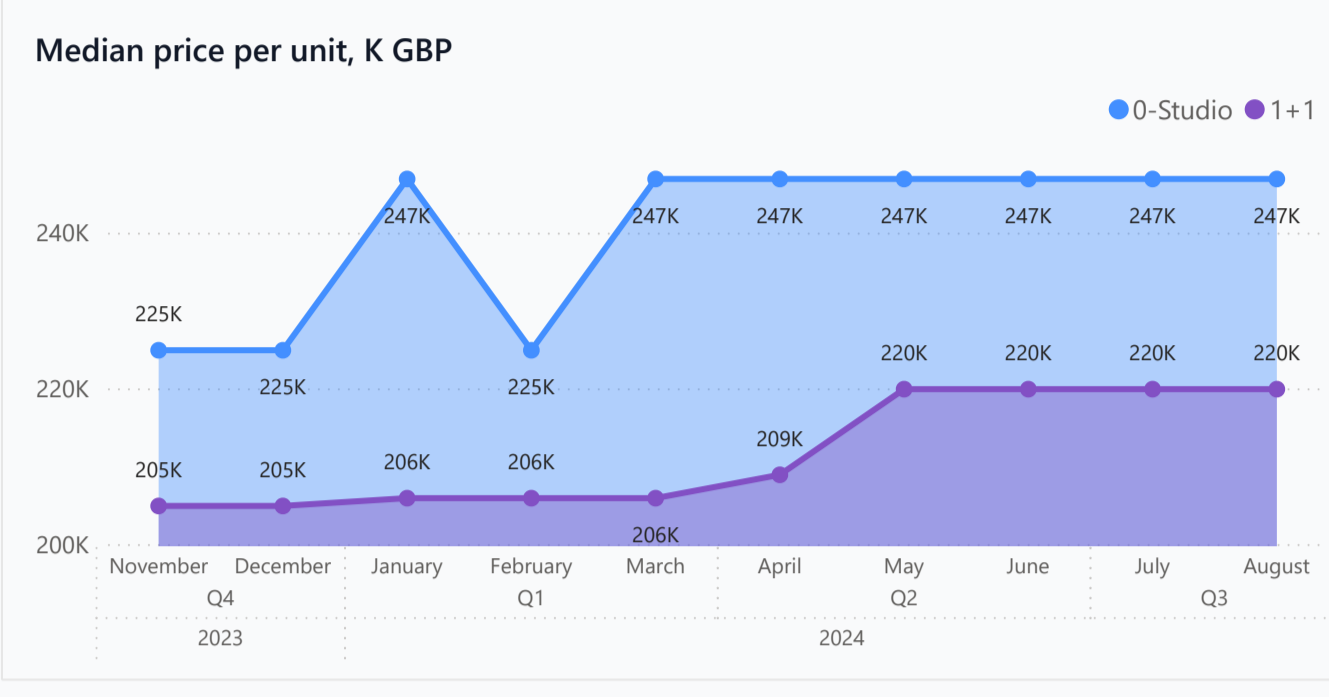
Distance to key locations:
 5 minutes drive from a professional 18 hole international golf course and a further 25 minutes drive from Kyrenia

Whether you are seeking the perfect place to relax and unwind, or looking to indulge in the ultimate luxury vacation experience, Casa del Mare is the perfect destination. One of the most unique projects of Northern Cyprus, Casa del Mare blends luxury and holiday life perfectly with its walking paths intertwined with nature, indoor and outdoor pools, Lagoon, Pera, Fitplus, Padel tennis and many more. It's time to make sea, sand and sun a permanent lifestyle.

Complex infrastructure

- Bar
- Café
- Central generator
- Central satellite
- Fitness centre
- Indoor pool
- Kid's playground
- Open pool
- Parking
- Restaurant
- Tennis court
- VRF system

Available units 68 / 264 total



Plans



Payment plans

Deposit (non-refundable) 5 %

Option	Down payment	Installments months	Discount	Offer
Option 1	35 %	65% till key	5% upon full payment	-
Option 2	-	-	-	-
Option 3	-	-	-	-
Option 4	-	-	-	-

Special offer

Pay a down payment of 50% and you will receive furniture as a gift

Fully furnished design package

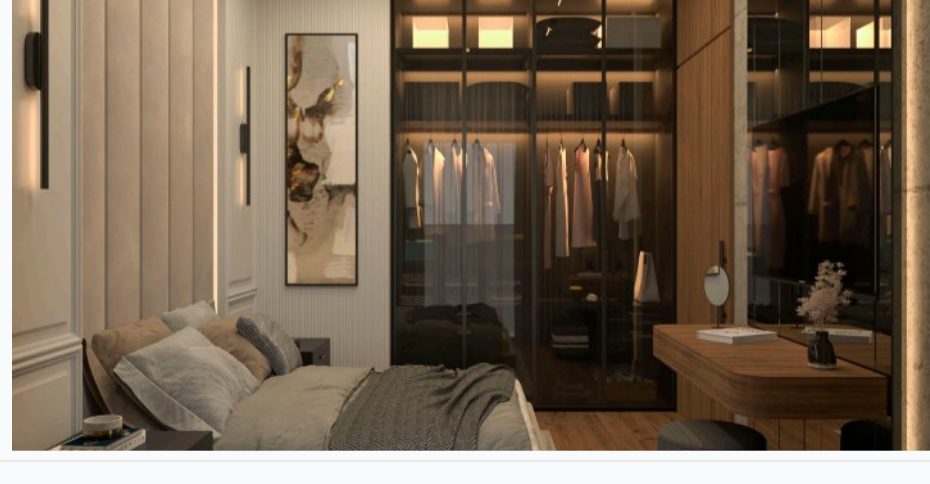
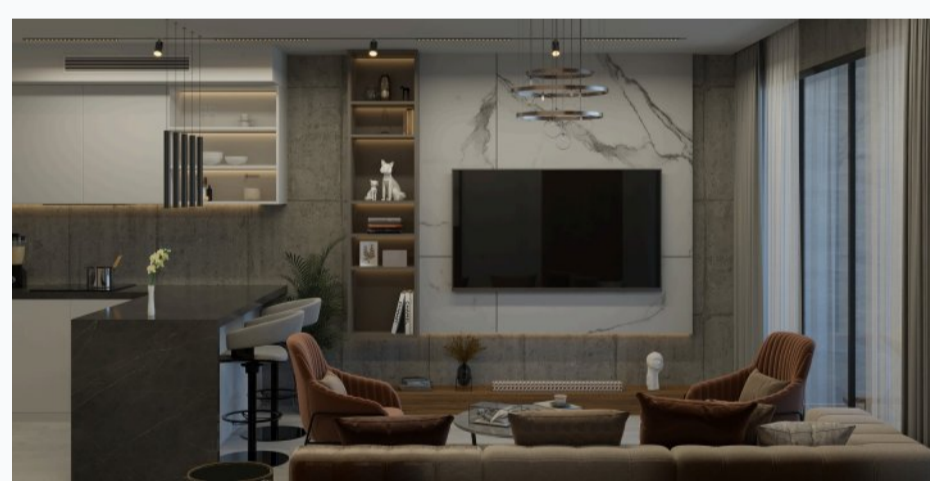
Rental guarantee
5% for 2 years

Trafo 2500 GBP Resale after 35% Maintenance fee 80-120 GBP monthly Rental services -

Details

Bedrooms	Subtype	Block	Unit №	Floor	View	Bathroom	Internal area, sq. m	Balcony/ Terrace, sq. m	Rooftop terrace, sq. m	Garden, sq. m	Gross covered area, sq. m	Current price, GBP	Price per sqm, GBP
0-Studio	Flat	53	2	0				26			63	224 900	3 570
0-Studio	Flat	53	3	01				63			100	268 900	2 689
1+1	Loft	44	1	0				26			63	219 900	3 490
1+1	Loft	44	4	01				63			100	263 900	2 639
1+1	Loft	45	1	0				26			63	219 900	3 490
1+1	Loft	45	4	01				63			100	263 900	2 639
1+1	Loft	46	1	0				26			63	219 900	3 490
1+1	Loft	46	4	01				63			100	263 900	2 639
1+1	Loft	47	1	0				26			63	224 900	3 570
1+1	Loft	47	4	01				63			100	268 900	2 689
1+1	Loft	48	1	0				26			63	224 900	3 570
1+1	Loft	48	4	01				63			100	268 900	2 689
1+1	Loft	49	4	01				63			100	268 900	2 689
1+1	Loft	50	1	0				26			63	224 900	3 570
1+1	Loft	51	1	0				26			63	224 900	3 570
1+1	Loft	52	1	0				26			63	224 900	3 570
1+1	Loft	54	1	0				26			63	224 900	3 570
1+1	Loft	54	4	01				63			100	268 900	2 689
1+1	Loft	55	1	0				26			63	224 900	3 570
1+1	Loft	55	4	0				26			63	224 900	3 570
1+1	Loft	55	6	01				63			100	268 900	2 689
1+1	Loft	55	7	01				63			100	268 900	2 689
1+1	Loft	59	4	01				63			100	202 900	2 029
1+1	Loft	60	4	01				63			100	202 900	2 029
1+1	Loft	62	8	01				63			100	202 900	2 029
1+1	Loft	64	2	0				26			63	219 900	3 490
1+1	Loft	64	3	01				63			100	246 900	2 469
1+1	Loft	66	2	0				26			63	202 900	3 221

Interior specification



Interior specification

- 60/120cm high quality floor tiles
- Air Conditioner
- Artificial stone kitchen countertop
- Double glazed windows
- Fitted wardrobes in each bedroom
- High quality taps and showers
- Laminate flooring in the bedrooms
- Underfloor heating in bathrooms

Exterior specification



Exterior specification

- Glass fence balcony
- Landscape design

Location of complex

